

# LCPVEK SOLENOID OPERATED ISOLATION VALVES 24V

[edwardsvacuum.com](http://edwardsvacuum.com)

Edwards' aluminium LCPVEK valves are designed for vacuum applications which need a compact, simple, solenoid operation valve to control gas flow.

These economical valves are ideal for a number of duties ranging from simple laboratory pump isolation to OEM vacuum system integration and design. Their versatility makes them effective both in vacuum pipelines and in chamber admittance applications.

Careful design of the solenoid power control and vacuum isolation components delivers efficient magnetic actuation with optimum vacuum performance at an affordable price.



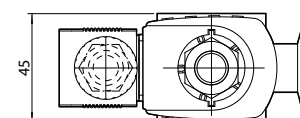
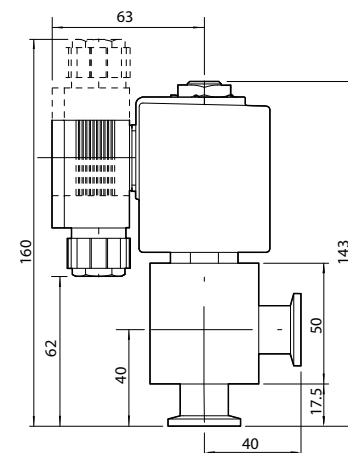
## Features and benefits

---

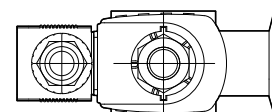
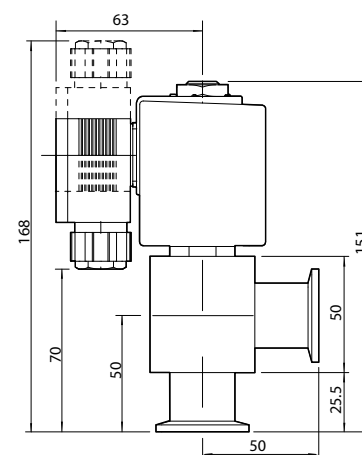
- Economical design
- Electrical actuation
- Low power requirements
- Electronic boost power supply
- Efficient magnetic design

Technical data

LCPVEK		
Valve actuation type	Single acting, electrically opened, spring return	
Molecular conductance	1.5 ls <sup>-1</sup>	
Pressure range	mbar (Torr)	1 x 10 <sup>-6</sup> - 1000 (7.5 x 10 <sup>-7</sup> - 750)
Max pressure differential (open/close)	mbar (Torr)	1000 (750)
Time to open	ms	20
Time to close	ms	50
Max cycle frequency	h <sup>-1</sup>	600
Leak rate	mbar	Typically 1 x 10 <sup>-6</sup> ls <sup>-1</sup>
	Torr	Typically 7.5 x 10 <sup>-7</sup> ls <sup>-1</sup>
Power consumption		
Open	72 W for 400 ms / 50-110 ms (a.c./d.c. supply)	
Hold	5 W a.c./d.c.	
Operating temperature range	-10 to 55 °C	
Weight		
LCPV16EK	g (oz)	900 (31)
LCPV25EK	g (oz)	900 (31)
Enclosure rating	IP65	
Voltage		
24 V a.c./d.c.	+/- 10%	
230 V		
110 V		
Construction materials		
Body	Aluminium, stainless steel, silver	
Seals	FKM Fluoroelastomer	



NW16



NW25

Ordering information

Description	Order No.
LCPV16EKA 24 V a.c./d.c. Solenoid Valve	C41780200
LCPV25EKA 24 V a.c./d.c. Solenoid Valve	C41790200

GLOBAL CONTACTS

Publication Number: 3601 0106 01  
 © Edwards Limited 2016. All rights reserved Edwards and the Edwards logo are trademarks of Edwards Limited

Whilst we make every effort to ensure that we accurately describe our products and services, we give no guarantee as to the accuracy or completeness of any information provided in this datasheet.

Edwards Ltd, registered in England and Wales  
 No. 6124750, registered office: Innovation Drive,  
 Burgess Hill, West Sussex, RH15 9TW, UK.

**EMEA**

**UK** +44 1444 253 000  
 (local rate) 08459 212223

**Belgium** +32 2 300 0730

**France** +33 1 4121 1256

**Germany** 0800 000 1456

**Italy** + 39 02 48 4471

**Israel** + 972 8 681 0633

**ASIA PACIFIC**

**China** +86 400 111 9618

**India** +91 20 4075 2222

**Japan** +81 47 458 8836

**Korea** +82 31 716 7070

**Singapore** +65 6546 8408

**Taiwan** +886 3758 1000

**AMERICAS**

**USA** +1 800 848 9800

**Brazil** +55 11 3952 5000

